

TITLE: WebDevice Installation Manual	Document ID: TRN-1111	PAGE 1 of 20
---	--------------------------	--------------

InstantGMP WebDevice Installation Manual

Contents

Internet of Things (IoT) and Equipment Integration	1
Local Connection Example.....	2
WebDevice Hub Example	3
Installing WebDevice Desktop App	4
WebDevice Admin	7
Connecting the devices.....	12
Testing Equipment Connection	19

Internet of Things (IoT) and Equipment Integration

A unique feature of the InstantGMP™ software is an Internet of Things (IoT) platform available in the system. This allows for a network of devices and electronic equipment, sensors, actuators, and much more the ability to connect and to exchange data for full integration with electronic batch records.

Any serial device or equipment with a serial I/O can be integrated with the InstantGMP™ IoT. The electronic batch records can interact with equipment for tasks such as requesting data or for opening and closing valves and circuits.

IoT has a multitude of benefits:

- Connects data to Batch Production Records
- Improved quality through increased accuracy and reduction of transcription errors
- Reduction of labor costs through automatic operations
- Added traceability before, during, and after production

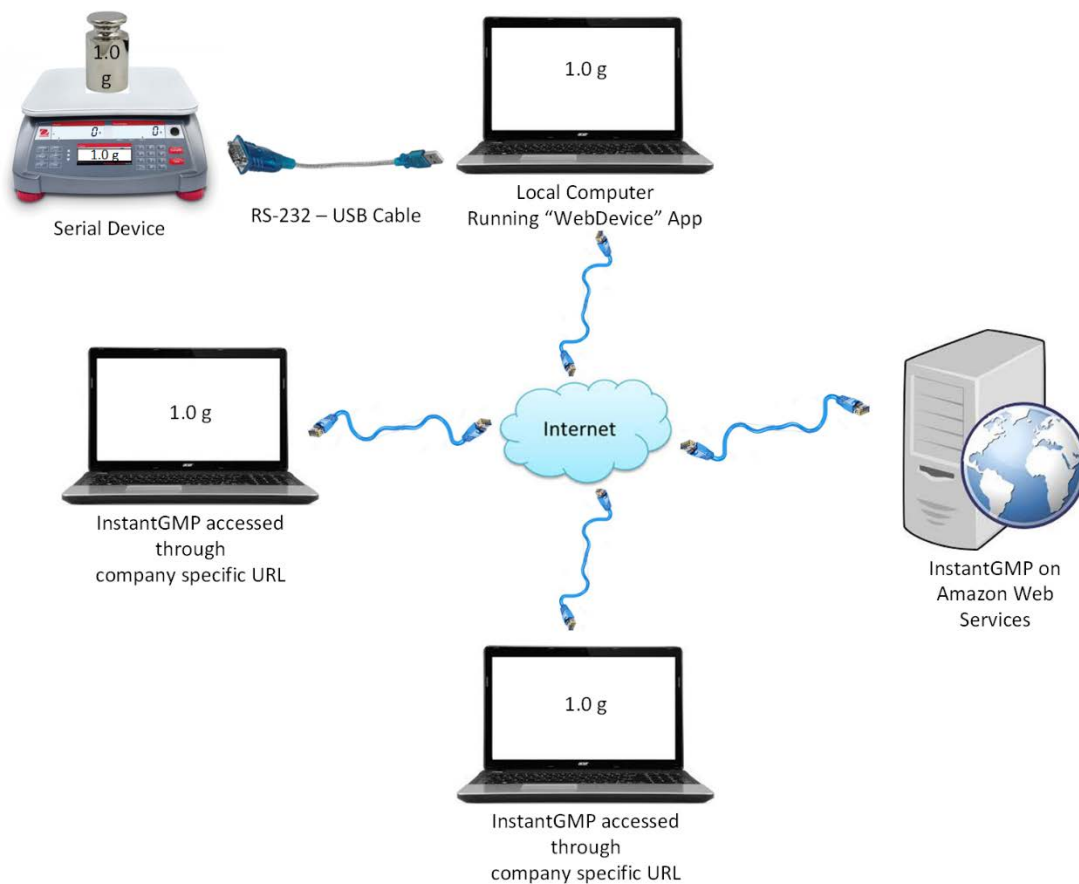
There are two ways that equipment can be integrated with InstantGMP™: through a local connection or via a WebDevice hub. The local connection requires a computer or other device to be directly connected to equipment while a WebDevice hub is best suited for companies with multiple pieces of equipment scattered across a facility. In both cases a WebDevice app will be installed on a computer. The app will be installed

TITLE: WebDevice Installation Manual	Document ID: TRN-1111	PAGE 2 of 20
---	--------------------------	--------------

on a computer attached directly to the device in the Local Connection configuration. The app will be installed on a network server in the WebDevice Hub Configuration.

Local Connection Example

Scale Interfaced with one PC connected to the Internet

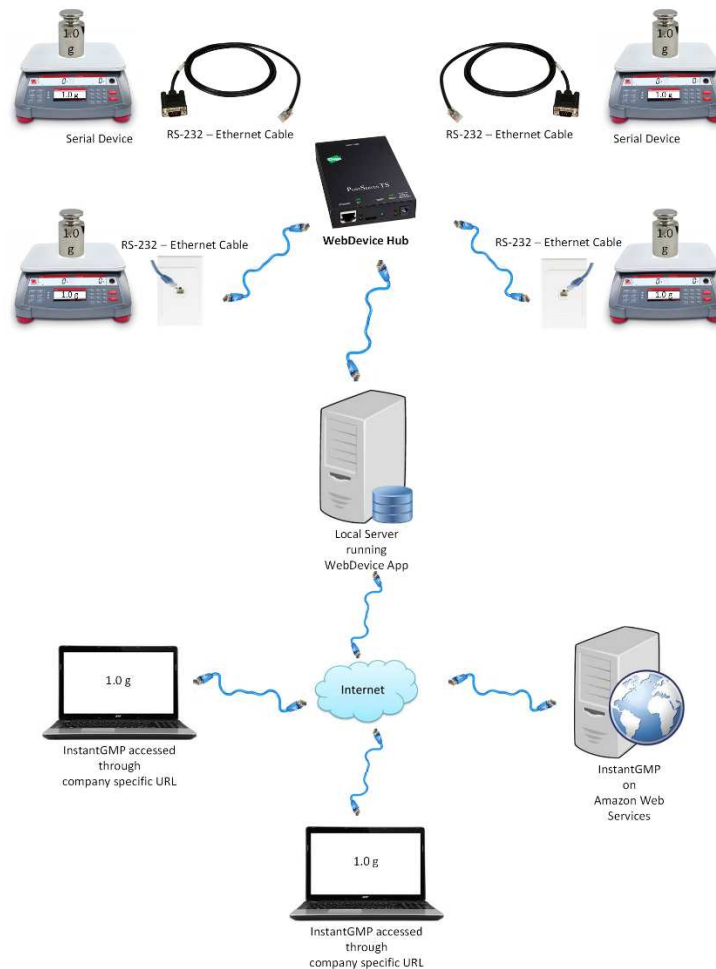


In this configuration, the equipment or serial device (e.g. scale) is connected to a local computer with an RS-232 to USB cable. The local computer has the WebDevice app running on it. The local computer in turn is connected to the internet. The InstantGMP software running on Amazon Web Services is connected to the local computer which interacts with the serial device. Any other computer that is running the company specific InstantGMP software can interact with the serial device through the internet.

TITLE: WebDevice Installation Manual	Document ID: TRN-1111	PAGE 3 of 20
---	--------------------------	--------------

WebDevice Hub Example

Multiple Scales Interfaced through a WebDevice Hub



In this configuration, multiple equipment or serial devices (e.g. scales) are connected to a WebDevice Hub with RS-232 to Ethernet cables either directly to the Hub or indirectly through the local Ethernet. A local server on the Ethernet has the WebDevice app running on it. The local server in turn is connected to the internet. The InstantGMP software running on Amazon Web Services is connected to the local server which connects to the WebDevice Hub which interacts with the serial devices. Any other computer that is running the company specific InstantGMP software can interact with any of the serial device through the internet.

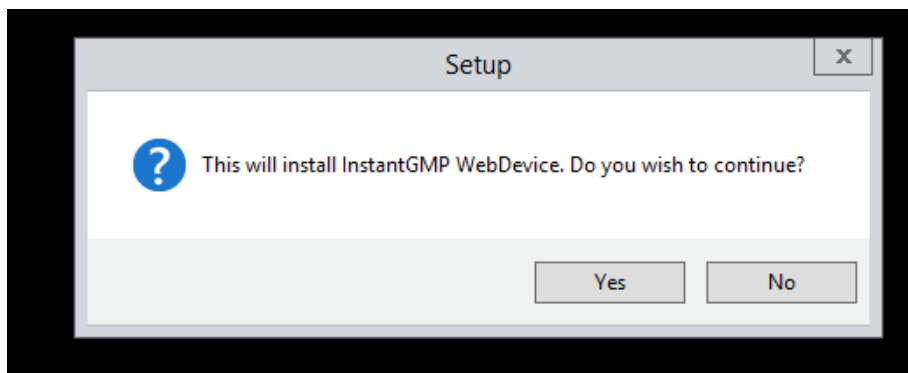
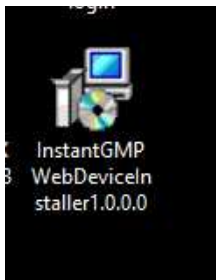
TITLE: WebDevice Installation Manual	Document ID: TRN-1111	PAGE 4 of 20
---	--------------------------	--------------

Installing WebDevice Desktop App

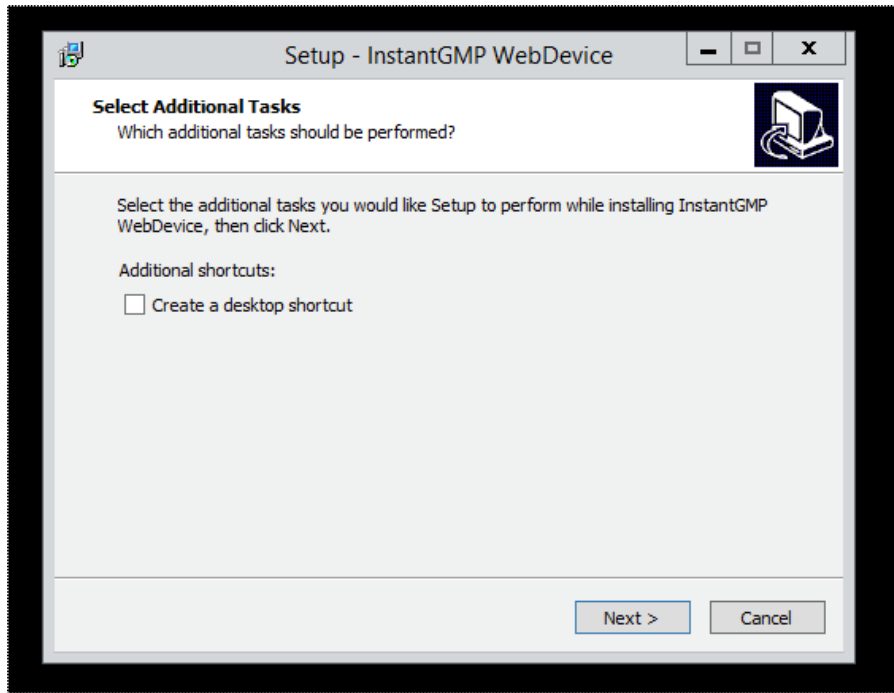
The WebDevice Desktop App must be installed using the WebDevice Installation Program on a local computer or on a local server in order for serial devices to interact with the company specific InstantGMP software. Consult the configurations above to determine where the app should be installed.

The WebDevice Installation Program can be accessed on the InstantGMP web site at <https://www.instantgmp.com/support> or on the thumb drive provided by your support personnel.

1. Download the program onto your computer and follow the installation instructions. Select **yes** to install.



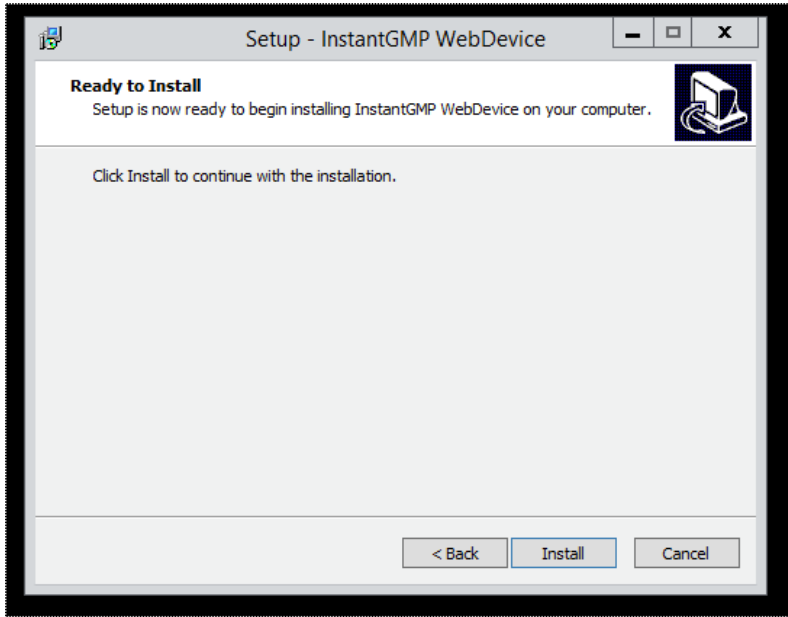
TITLE: WebDevice Installation Manual	Document ID: TRN-1111	PAGE 5 of 20
---	--------------------------	--------------



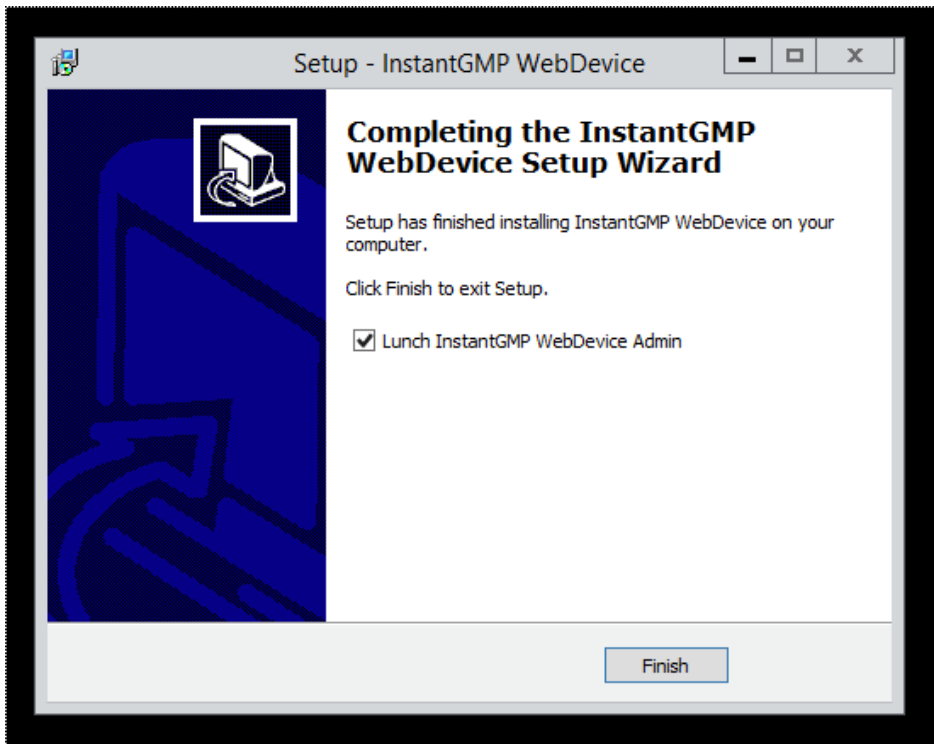
2. Select next.
3. If you've chosen "Create a desktop shortcut" here then after the application has installed a shortcut to the management interface which will show on your desktop the following icon:



TITLE: WebDevice Installation Manual	Document ID: TRN-1111	PAGE 6 of 20
---	--------------------------	--------------



4. Select Install

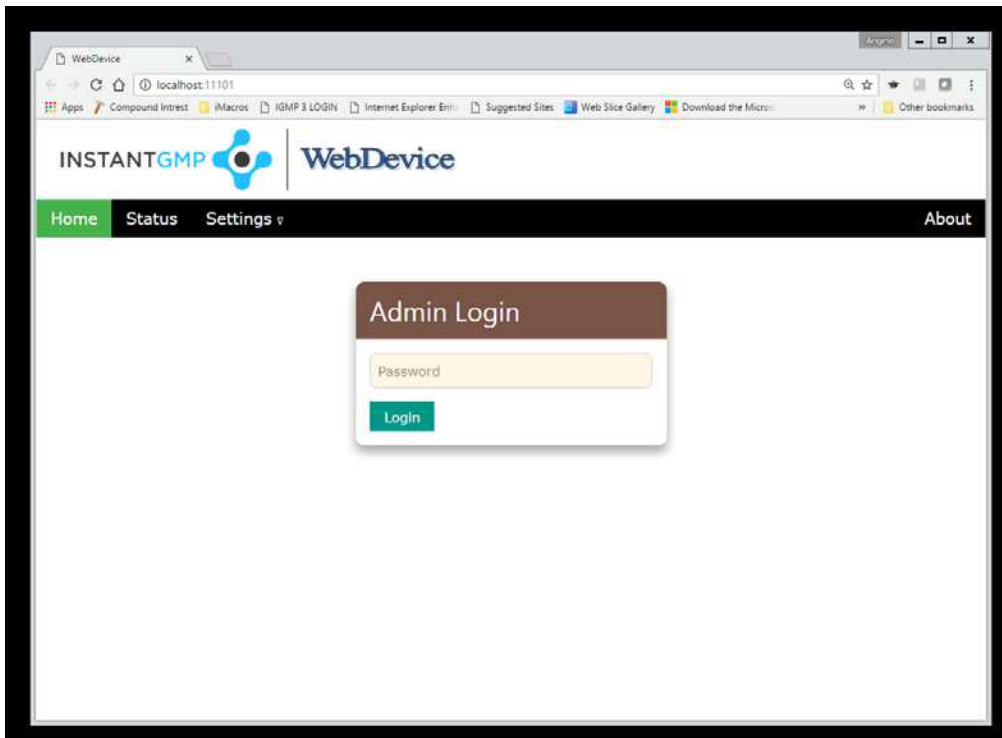


5. Select finish.

TITLE: WebDevice Installation Manual	Document ID: TRN-1111	PAGE 7 of 20
---	--------------------------	--------------

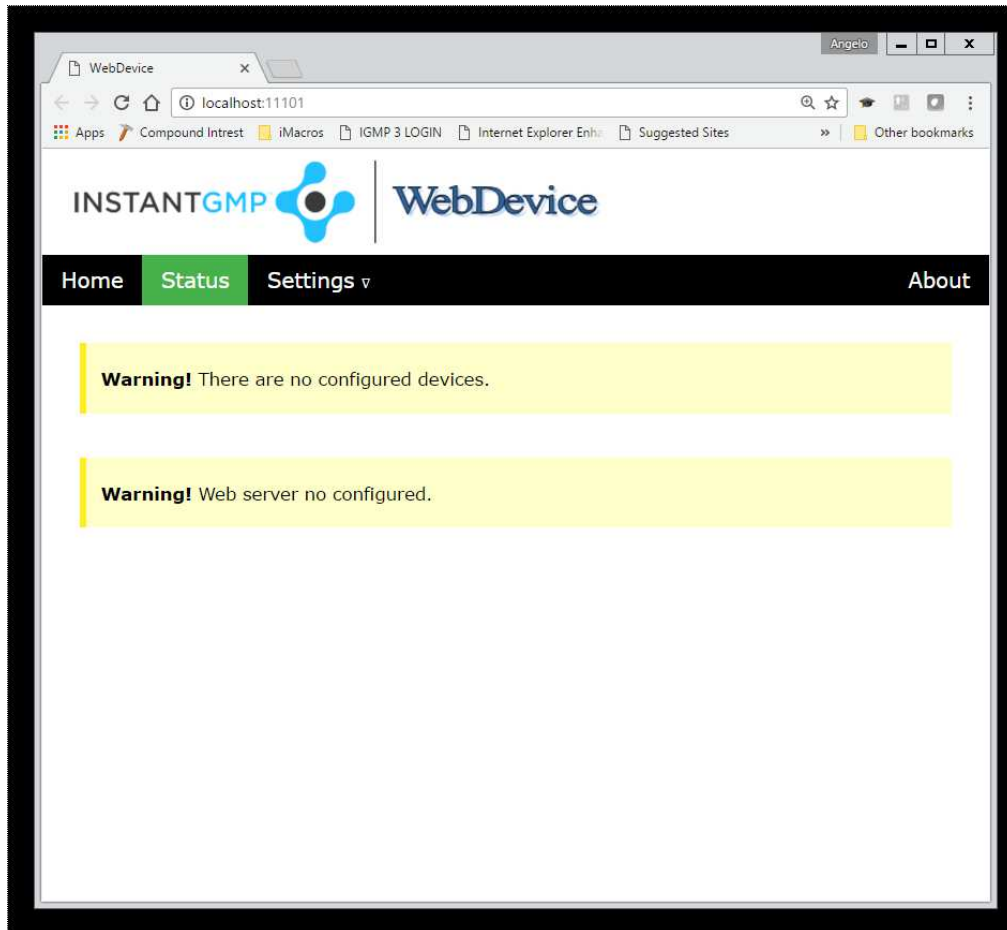
WebDevice Admin

1. If you've selected "Launch InstantGMP WebDevice Admin" prior to finishing the installation, a webpage will be open pointing to the administration website for this installation. If it doesn't start, you can double click on the "shortcut" created earlier, or search via the Start Menu for "InstantGMP WebDevice."



2. The installation by default has NO password and you can start the process by clicking on "Login"

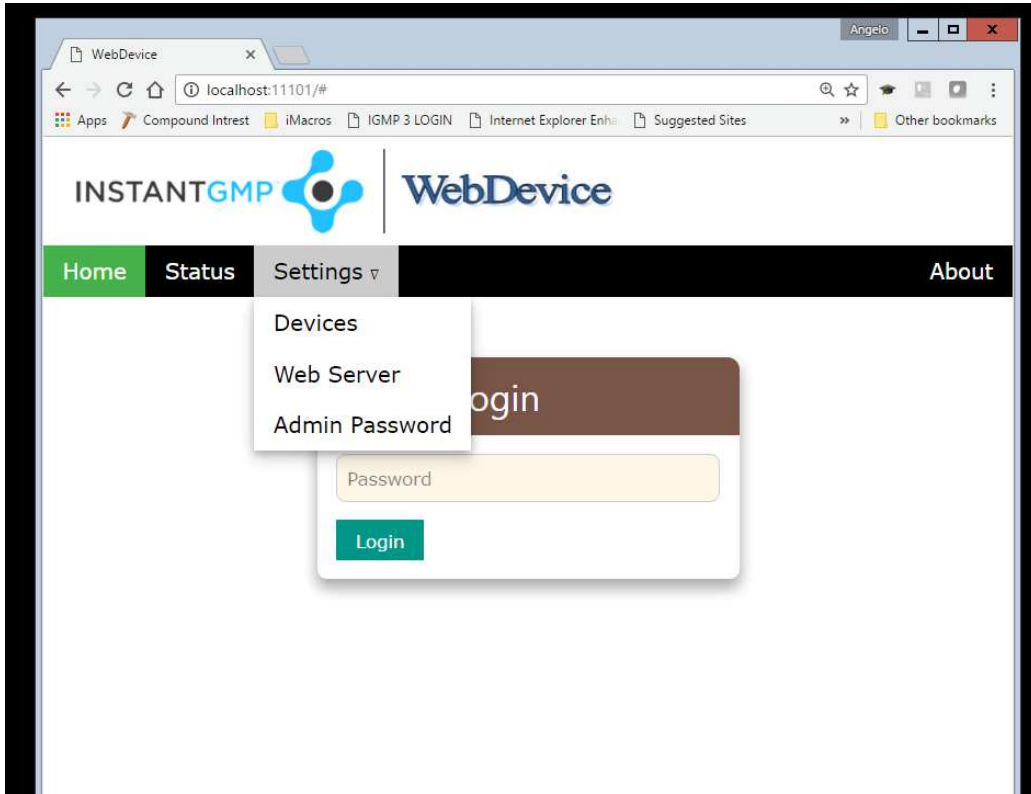
TITLE: WebDevice Installation Manual	Document ID: TRN-1111	PAGE 8 of 20
---	--------------------------	--------------



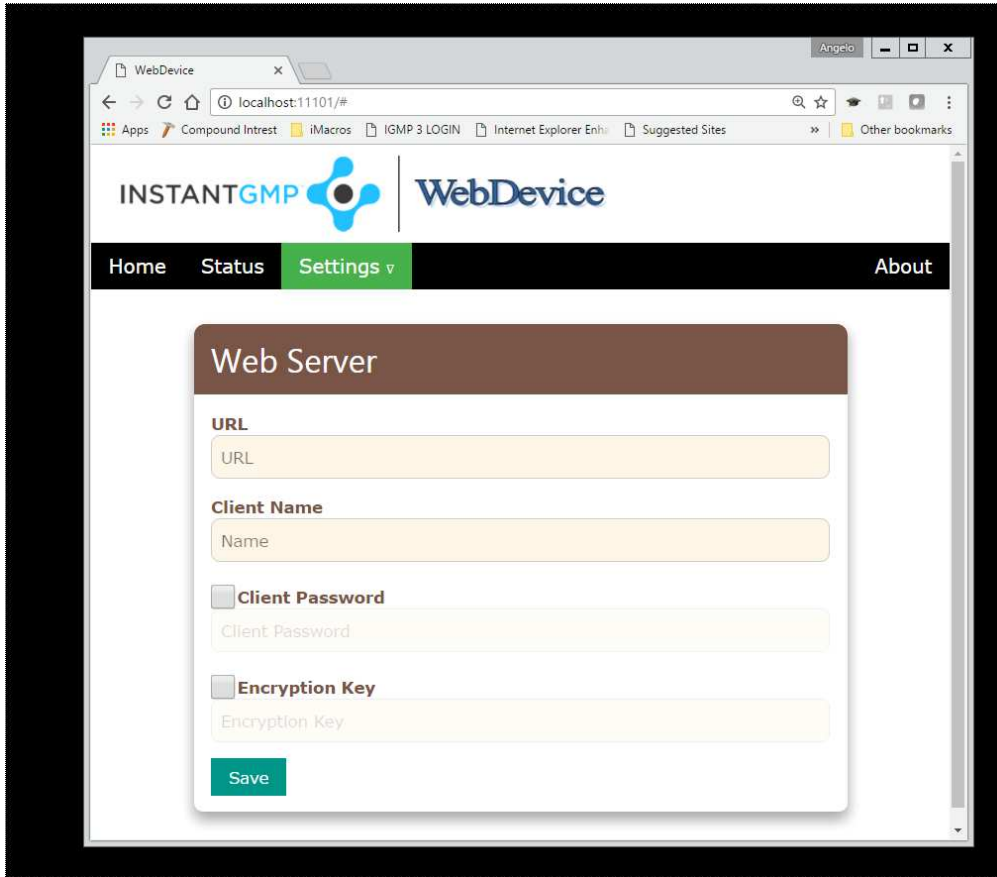
Connecting to the server (specifically your IGMP instance)

1. Once you are logged in, the first step is to configure the information related to your instance located on InstantGMP servers. Click on Settings followed by Web Server

TITLE: WebDevice Installation Manual	Document ID: TRN-1111	PAGE 9 of 20
---	--------------------------	--------------



<p>TITLE: WebDevice Installation Manual</p>	<p>Document ID: TRN-1111</p>	<p>PAGE 10 of 20</p>
---	----------------------------------	----------------------



2. You'll be asked to enter the URL, Client Name, Client Password and the Encryption Key. All of this information will be provided by your InstantGMP support personnel.

Device Client Name	7830a760f2594ccee8779442317dccb3fb208b16d51e9002faa076b27700cbe18cfd8f399fc72816	
Device Client Password	2bd72214b9bb99d160dde4399439f1a00f385aeb	
Device Encryption Key	DDB2200A16659E983D964339CDDCB517	
RESET DEVICE CREDENTIALS		
Device Token Session	1800	Define the time a session will be active without interaction (in seconds)
Device Token Active	168	Define the maximum amount of time a session can live (in hours). Force a login after expired

Quick Summary

TITLE: WebDevice Installation Manual	Document ID: TRN-1111	PAGE 11 of 20
---	--------------------------	---------------

Tip: Make sure there are no leading spaces when you copy the passwords and key. It is best to double click the text to highlight the selection so as not to copy any spaces to begin with.

Web Server

URL
http://trunk.igmpctest.com

Client Name
7830a760f2594ccee8779442317dcbb3fb208b16d51e9002faa076b27700

Client Password
.....

Encryption Key
.....

Save

3. Once you've entered this information you'll see on the Status screen (menu option), the current status of the **webserver**, which should be **CONNECTED**.

TITLE: WebDevice Installation Manual	Document ID: TRN-1111	PAGE 12 of 20
---	--------------------------	---------------

The screenshot shows the INSTANTGMP WebDevice interface. At the top, there are logos for INSTANTGMP and WebDevice. Below the logos is a navigation bar with 'Home', 'Status', and 'Settings' options. A yellow warning box states: 'Warning! There are no configured devices.' Below this is a 'Web Server' status card. The card has a brown header with the text 'Web Server' and a table titled 'Status Information'.

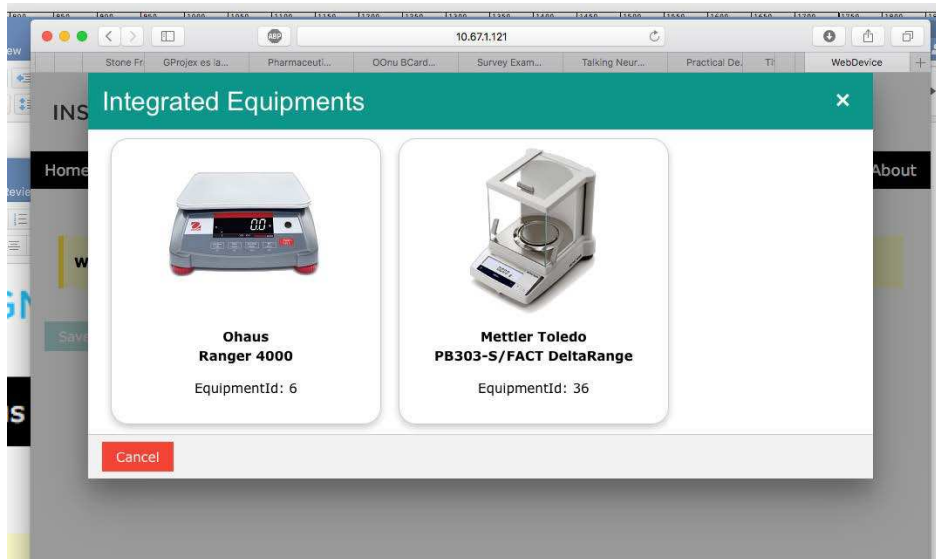
Status Information	
State	CONNECTED
URL	http://trunk.igmpptest.com

Connecting the devices

1. Connect your device(s) to your computer ports.

Note: All devices must have protocols written and uploaded to your instance so that when you select **Setting -> Devices** and click on **Add Device**, a list of integrated devices will appear from which to select.

TITLE: WebDevice Installation Manual	Document ID: TRN-1111	PAGE 13 of 20
---	--------------------------	---------------



2. Select a device from the list. Ensure that the Equipment Id shown on the screen matches the label on the equipment.

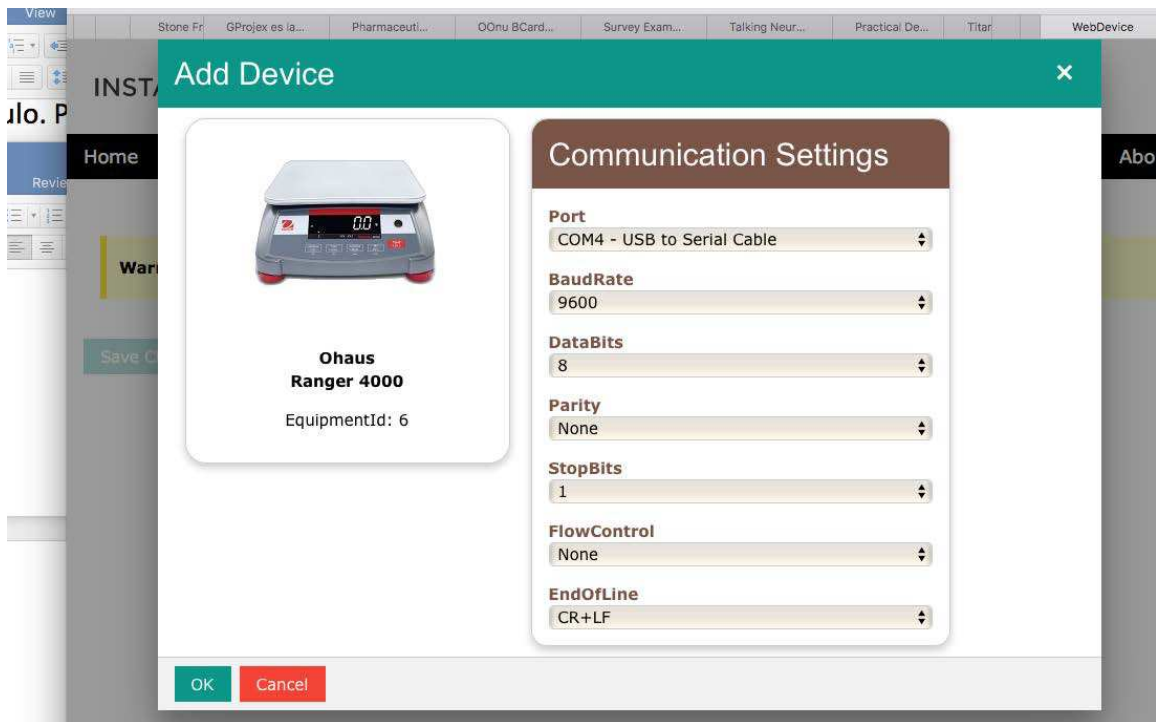
TITLE: WebDevice Installation Manual	Document ID: TRN-1111	PAGE 14 of 20
---	--------------------------	---------------

Equipment

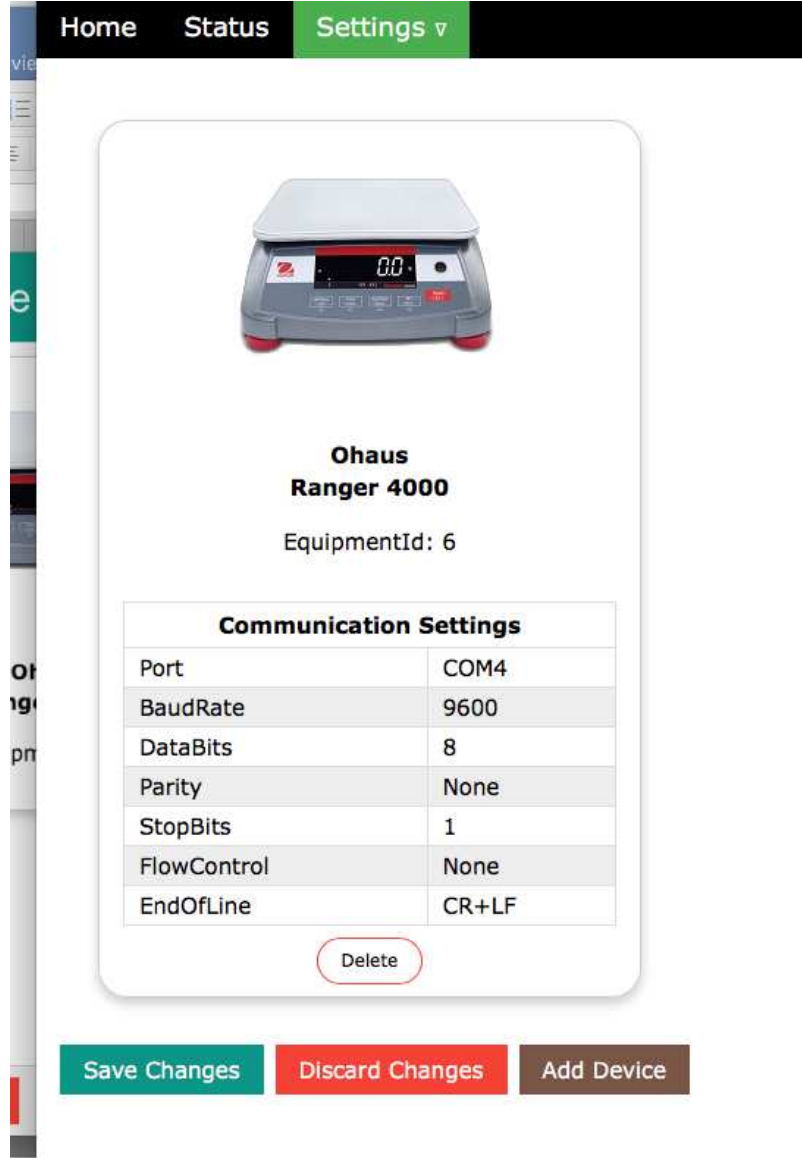
Equipment Id: 6
Equipment #: 005
Name: Ohaus Balance
Model #: Ranger 4000
Serial #: RO554789



3. Configure the serial port information for the applicable equipment.



TITLE: WebDevice Installation Manual	Document ID: TRN-1111	PAGE 15 of 20
---	--------------------------	---------------



Home Status Settings ▾

**Ohaus
Ranger 4000**
EquipmentId: 6

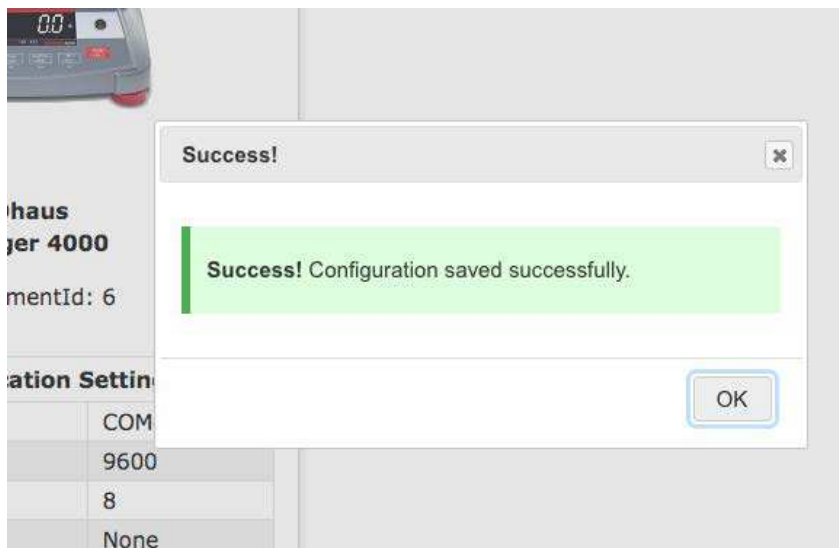
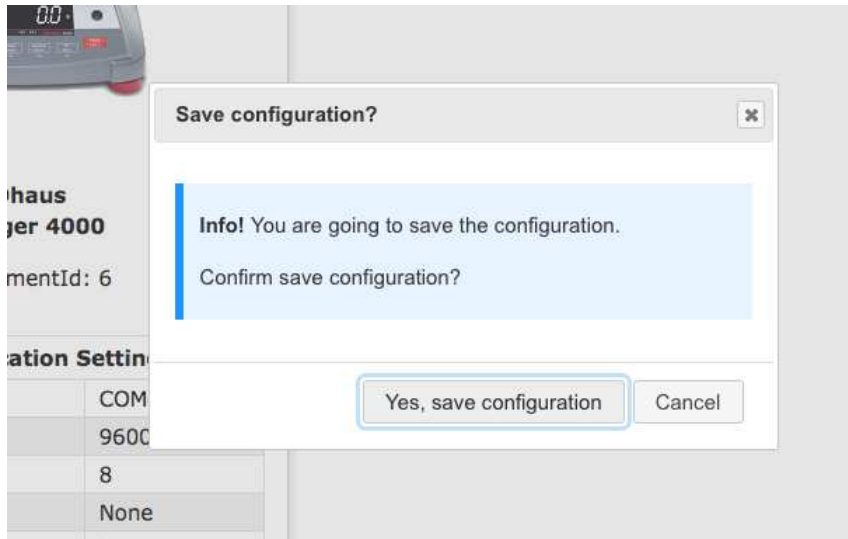
Communication Settings	
Port	COM4
BaudRate	9600
DataBits	8
Parity	None
StopBits	1
FlowControl	None
EndOfLine	CR+LF

Delete

Save Changes Discard Changes Add Device

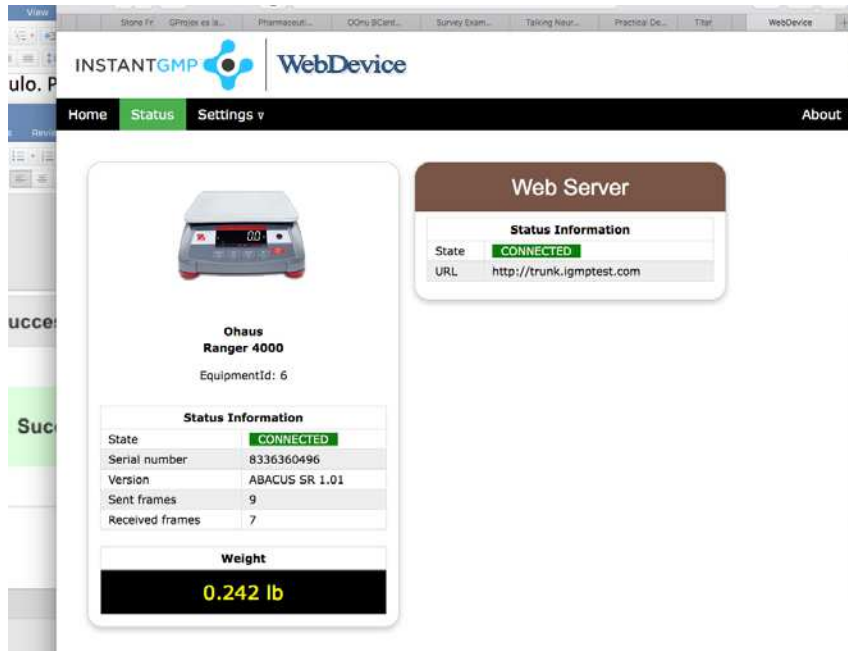
4. "Save Changes," select "Yes, save configuration" and then "OK"

TITLE: WebDevice Installation Manual	Document ID: TRN-1111	PAGE 16 of 20
---	--------------------------	---------------



5. Navigate to the Status screen. The equipment will say "**CONNECTED**". If the device is a scale, is turned on and has weight on it, you will see the weight/unit updated on the screen.

TITLE: WebDevice Installation Manual	Document ID: TRN-1111	PAGE 17 of 20
---	--------------------------	---------------



6. If you have more than one piece of equipment attached to this computer, you must repeat the process to add more equipment.
7. Create a password for the administrator of the devices by selecting **Settings -> Admin Password**.
8. **Save your password.**

TITLE: WebDevice Installation Manual	Document ID: TRN-1111	PAGE 18 of 20
---	--------------------------	---------------



The image shows a web form titled "Admin Password". It has a dark brown header with the title in white. Below the header are two light orange input fields: "New Password" and "Retype Password". At the bottom left of the form is a teal "Save" button.

9. This completes the installation process of the WebDevice application and the connection of your equipment to your instance.

TITLE: WebDevice Installation Manual	Document ID: TRN-1111	PAGE 19 of 20
---	--------------------------	---------------

Testing Equipment Connection

1. If a scale or balance has been integrated with InstantGMP, two new buttons will appear on the Equipment Log General Information screen: TEST EQUIPMENT CONNECTION and GET WEIGHT.

Equipment Log

Equipment Mettler Toledo

General
Equipment Log
Documents

Type	Balance/Scale		
Equipment #	005		
Equipment Name	Mettler Toledo		
Model #	PB303-S/FACT DeltaRange		
Serial #	RO554789		
Last Cleaned On	01/17/18 09:06 AM		
Last Calibrated On	01/17/18 09:07 AM		
Last PM On	01/17/18 09:07 AM		
Calibration Due Date	03/13/18	Notify	Paul Miller (pm01)
Preventive Maintenance Due Date	03/12/18	Notify	Paul Miller (pm01)
Integrated	Mettler Toledo-PB303-S/FACT DeltaRange		
Status	Preventive Maintenance Due ✔		
Approved By:	IGMPSYS iGMPSys (IGMPSYS) 03/12/18 12:35 AM EDT		

HTbEquipmentInfo01

TEST EQUIPMENT CONNECTION
GET WEIGHT
PRINT CLEAN TAG

2. When the TEST EQUIPMENT CONNECTION button is clicked it sends a signal to the equipment if it has been integrated and returns a message indicating whether or not there is a response.

Sending data to Equipment ...

Response: OK

TITLE: WebDevice Installation Manual	Document ID: TRN-1111	PAGE 20 of 20
---	--------------------------	---------------

3. The GET WEIGHT button will send a request to the balance and will indicate the weight displayed on the balance if the connection is successful.

Sending data to Equipment ...

Response: OK:0.5180kg